

# ALCO APOT Report

August 2024



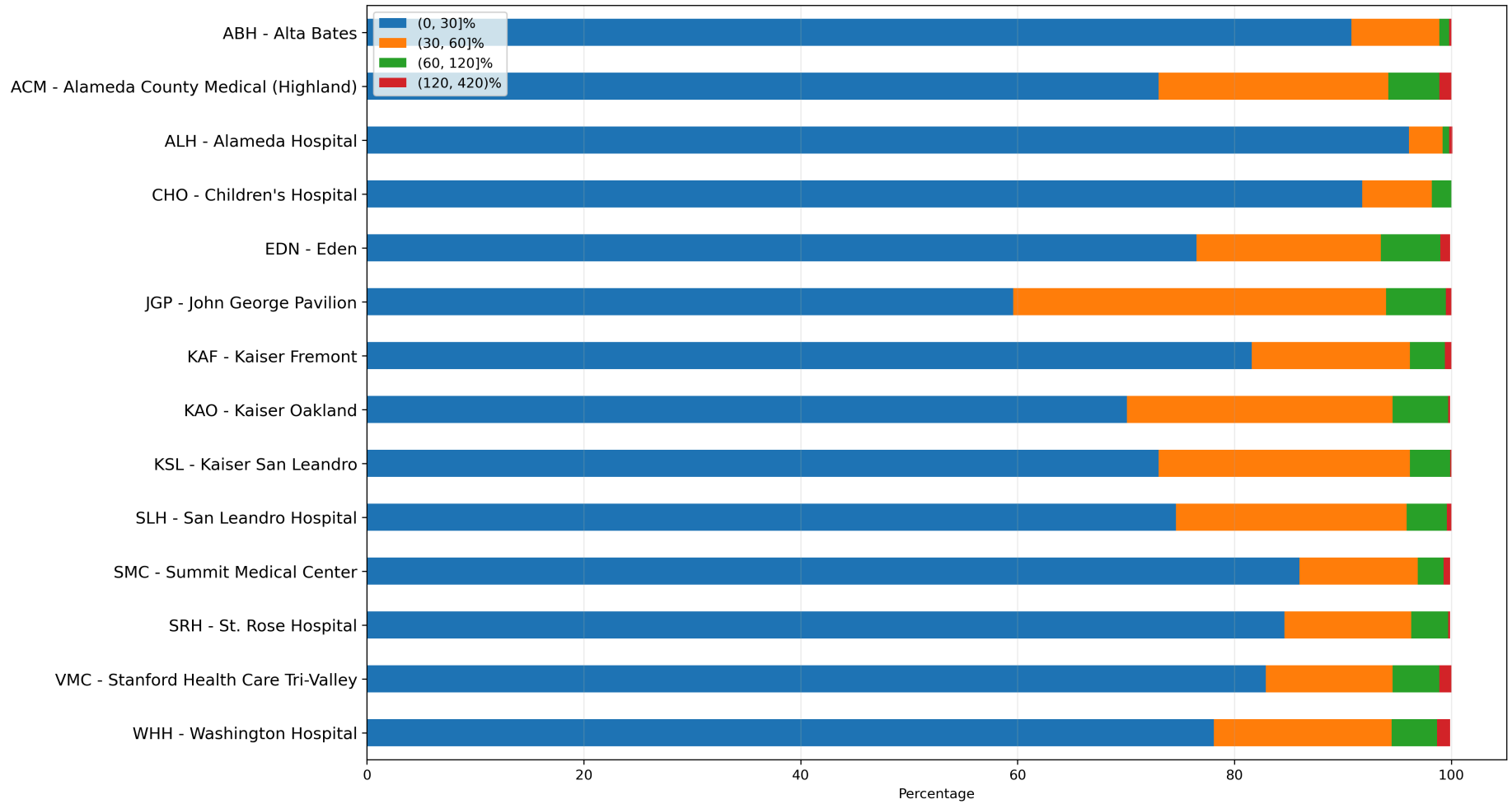
## 1 - Destinations APOT Statistics

	Transports	Average	90th Percentile	APOTs > 30 min	APOTs > 30 min %
ABH - Alta Bates	468	17.6	29.0	43	9.2%
ACM - Alameda County Medical (Highland)	1,065	24.8	49.7	288	27.0%
ALH - Alameda Hospital	359	13.0	20.5	14	3.9%
CHO - Children's Hospital	110	14.4	24.8	9	8.2%
EDN - Eden	974	24.1	46.9	229	23.5%
JGP - John George Pavilion	218	31.6	50.9	88	40.4%
KAF - Kaiser Fremont	501	21.0	40.5	92	18.4%
KAO - Kaiser Oakland	800	25.7	50.0	239	29.9%
KSL - Kaiser San Leandro	762	24.9	47.2	206	27.0%
SLH - San Leandro Hospital	544	24.6	42.8	138	25.4%
SMC - Summit Medical Center	1,311	19.3	35.3	183	14.0%
SRH - St. Rose Hospital	435	20.2	37.9	67	15.4%
VMC - Stanford Health Care Tri-Valley	738	22.2	45.5	126	17.1%
WHH - Washington Hospital	1,048	24.2	45.3	229	21.9%

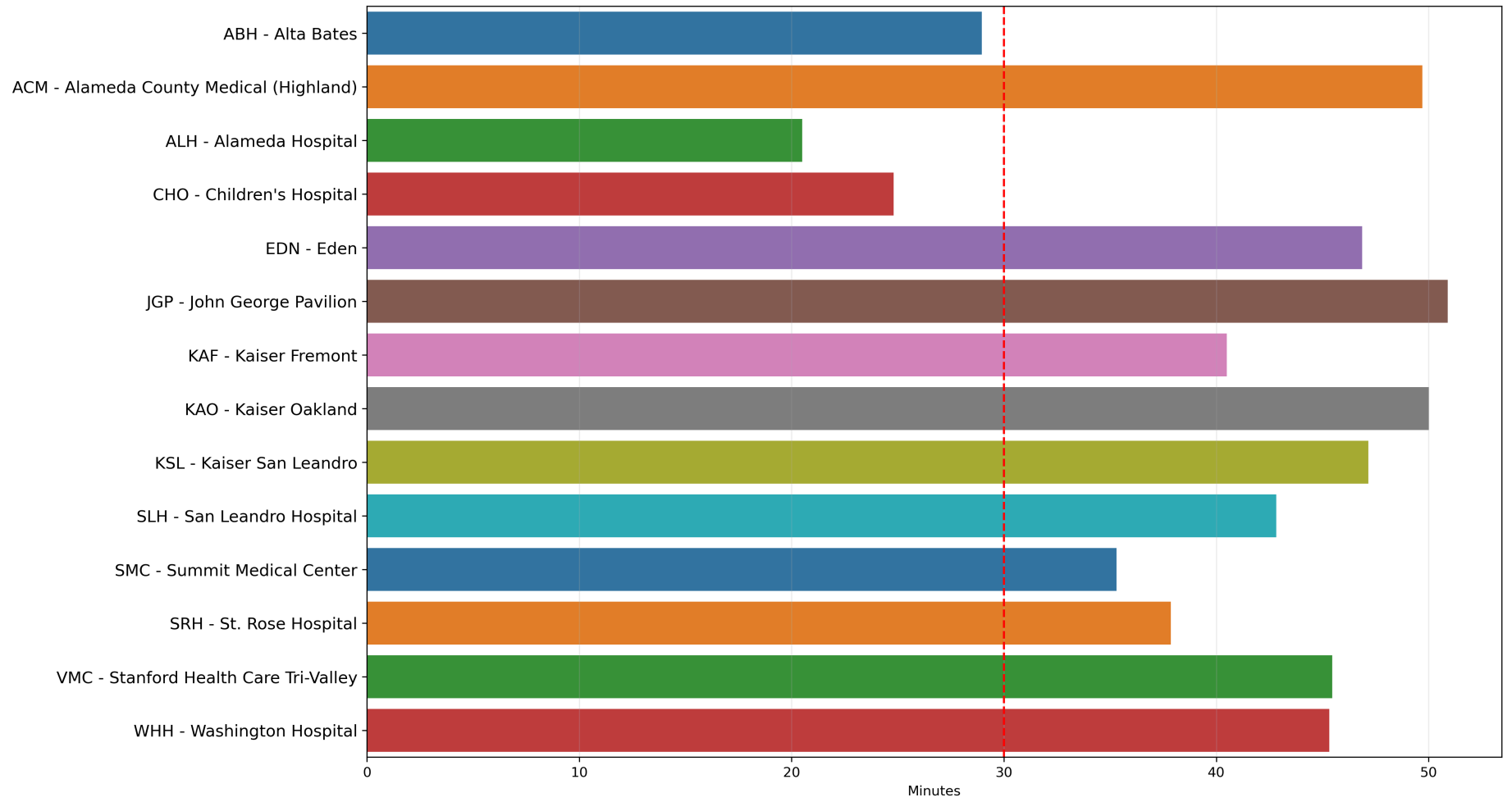
## 2 - Destinations APOT Bins

	Transports	(0, 30]	(0, 30]%	(30, 60]	(30, 60]%	(60, 120]	(60, 120]%	(120, 420)	(120, 420)%
<b>ABH - Alta Bates</b>	468	425	90.8%	38	8.1%	4	0.9%	1	0.2%
<b>ACM - Alameda County Medical (Highland)</b>	1,065	777	73.0%	226	21.2%	50	4.7%	12	1.1%
<b>ALH - Alameda Hospital</b>	359	345	96.1%	11	3.1%	2	0.6%	1	0.3%
<b>CHO - Children's Hospital</b>	110	101	91.8%	7	6.4%	2	1.8%	0	0.0%
<b>EDN - Eden</b>	974	745	76.5%	166	17.0%	54	5.5%	9	0.9%
<b>JGP - John George Pavilion</b>	218	130	59.6%	75	34.4%	12	5.5%	1	0.5%
<b>KAF - Kaiser Fremont</b>	501	409	81.6%	73	14.6%	16	3.2%	3	0.6%
<b>KAO - Kaiser Oakland</b>	800	561	70.1%	196	24.5%	41	5.1%	2	0.2%
<b>KSL - Kaiser San Leandro</b>	762	556	73.0%	177	23.2%	28	3.7%	1	0.1%
<b>SLH - San Leandro Hospital</b>	544	406	74.6%	116	21.3%	20	3.7%	2	0.4%
<b>SMC - Summit Medical Center</b>	1,311	1,128	86.0%	143	10.9%	32	2.4%	8	0.6%
<b>SRH - St. Rose Hospital</b>	435	368	84.6%	51	11.7%	15	3.4%	1	0.2%
<b>VMC - Stanford Health Care Tri-Valley</b>	738	612	82.9%	86	11.7%	32	4.3%	8	1.1%
<b>WHH - Washington Hospital</b>	1,048	819	78.1%	172	16.4%	44	4.2%	13	1.2%

### 3 - Destinations APOT Stacked Bins



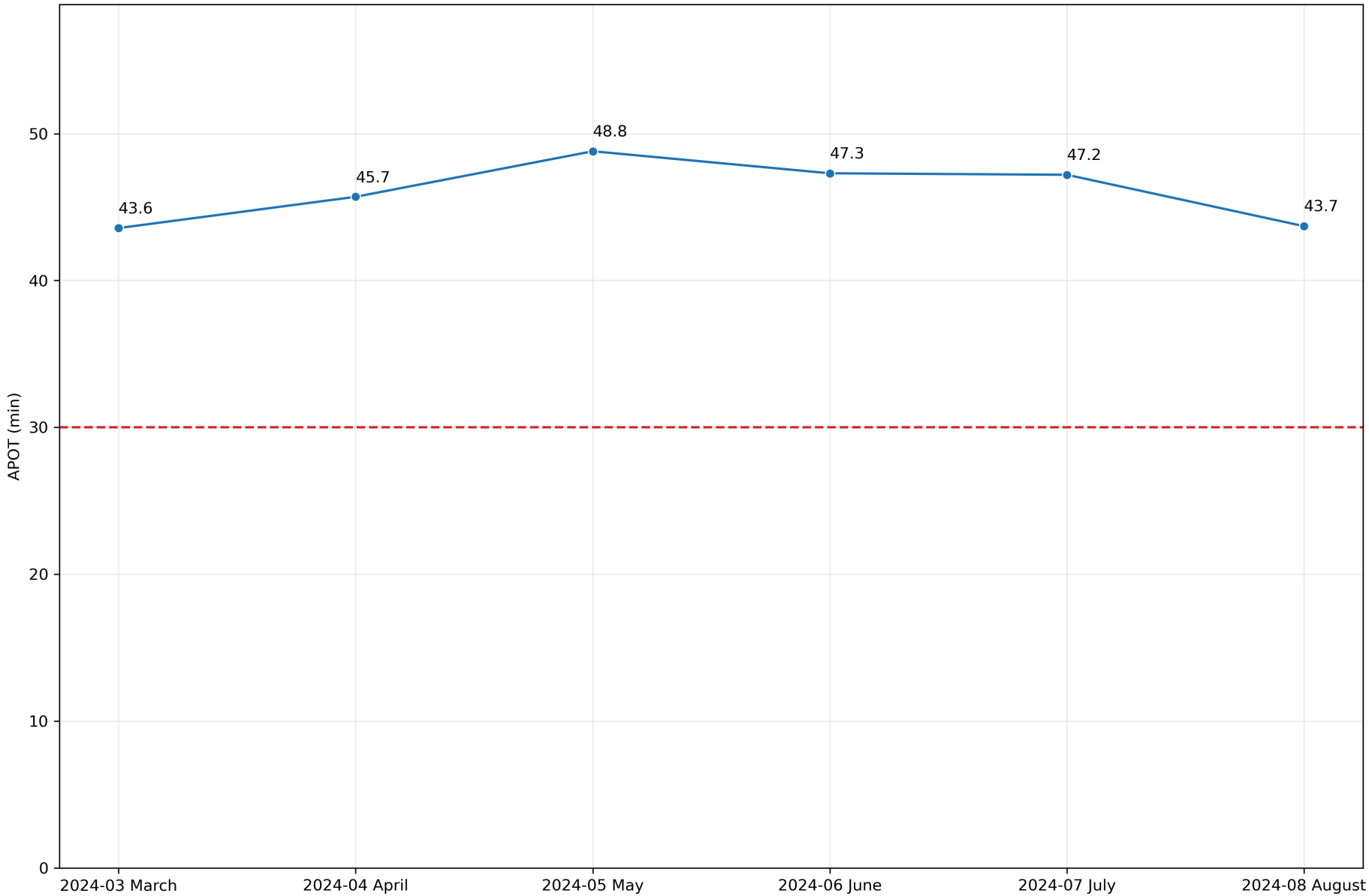
## 4 - August 2024 APOT by Destination 90<sup>th</sup> Percentile



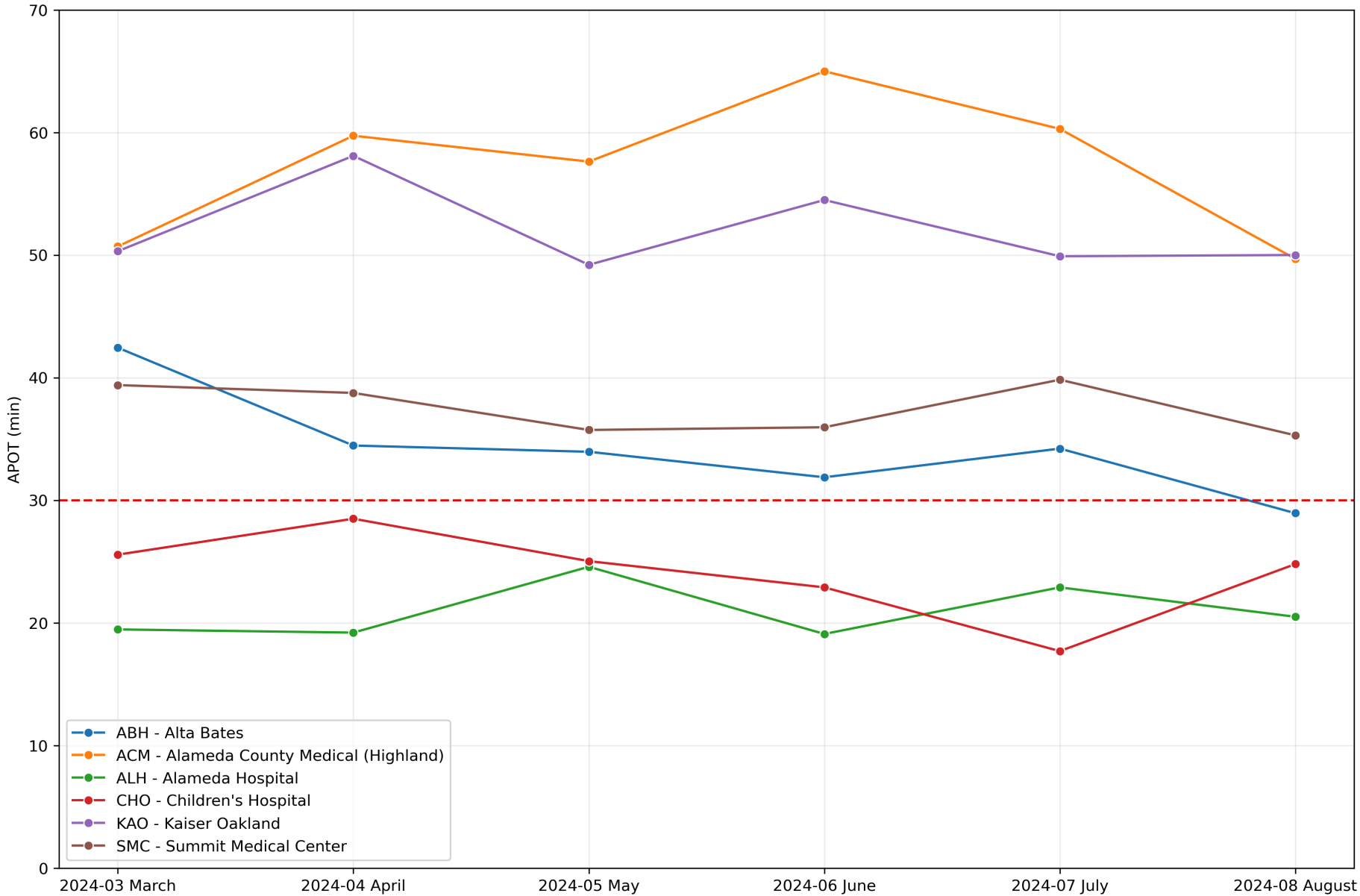
# 5 - APOTs by Destination 90<sup>th</sup> Percentile



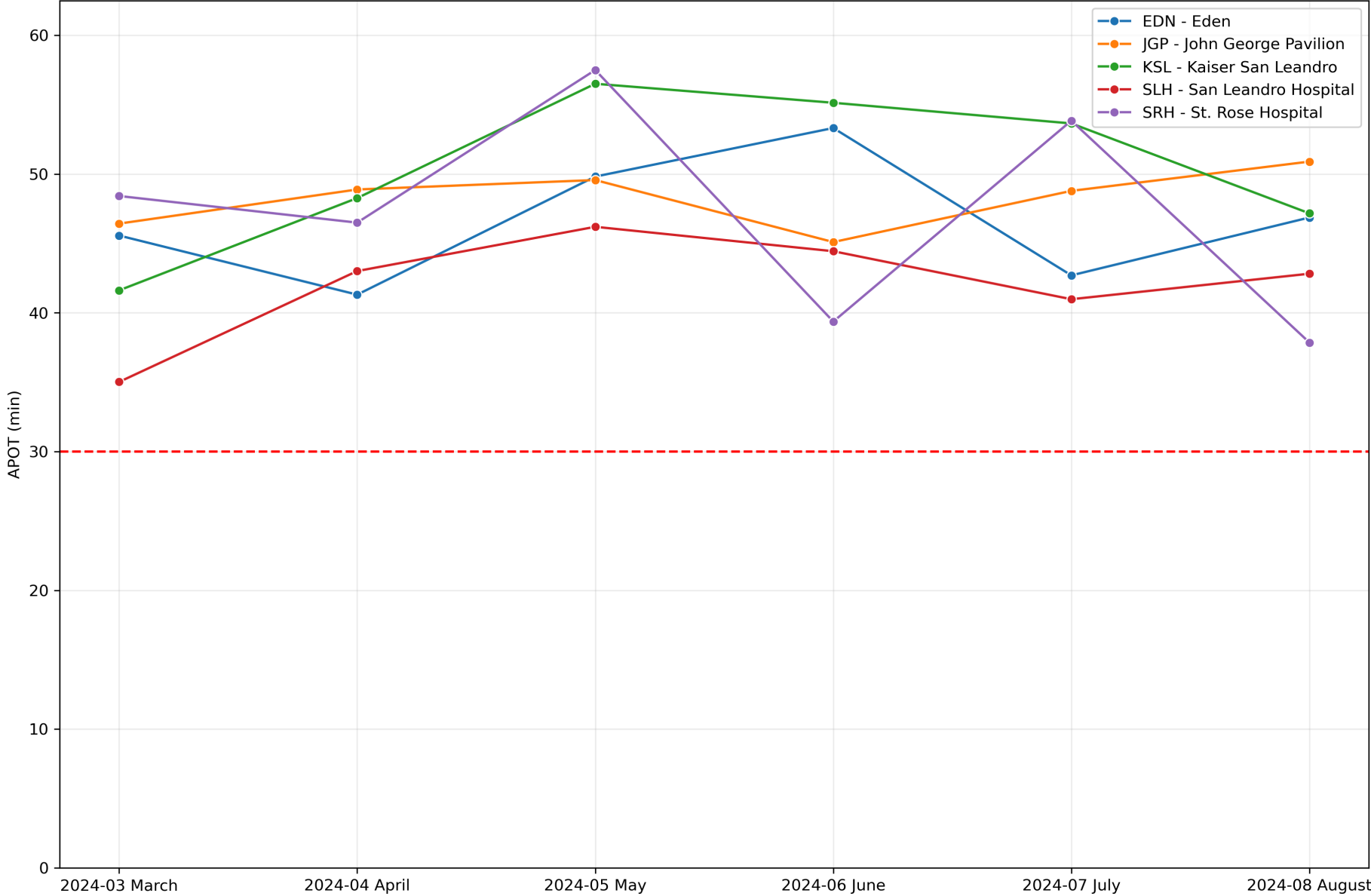
# 6 - Countywide APOT 90<sup>th</sup> Percentile



# 7 - Northern APOTs 90<sup>th</sup> Percentile



# 8 - Middle APOTs 90<sup>th</sup> Percentile





# 9 - Southern APOTs 90<sup>th</sup> Percentile

